

INDUSTRIAL UNIONS

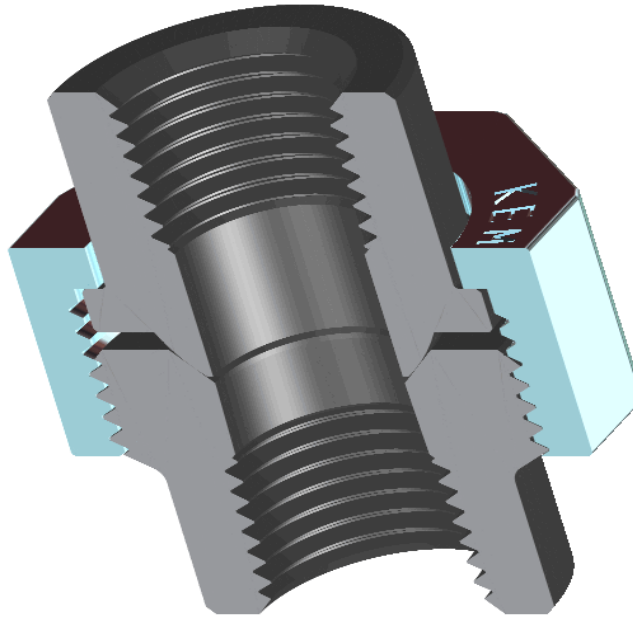


PRICE LIST

Prepared October 10th, 2019 at 2:25pm CDT.

Prices valid until 11/9/2019

Currency: USD



**Manufacturing
Headquarters**
3001 Darrell Road
Island Lake, IL 60042
phone: 847-526-2166
toll free: 800-323-1659
fax: 847-526-2241

**Pennsylvania
Sales & Service Center**
111 Arrowhead Drive
Slippery Rock, PA 16057
phone: 724-790-4990
toll free:
fax: 724-738-0172

**National
Sales Headquarters**
12343 Cutten Road
Houston, TX 77066
phone: 281-781-2730
toll free: 800-231-2724
fax: 281-781-2731

**Rocky Mountain
Sales & Service Center**
1423 4th Avenue
Grand Junction, CO 81501
phone: 970-609-5845
toll free:
fax: 970-609-5839

**Mid-Continent
Sales & Service Center**
2733 Industrial Drive
Sulphur, OK 73086
phone: 580-247-9623
toll free: 888-533-3722
fax: 580-622-2058

**Canadian
Sales & Service Center**
8001 Edgar Industrial Ave
Red Deer, AB T4P3S2
phone: 403-348-2570
toll free:
fax: 403-348-0873

**West Texas
Sales & Service Center**
1000 W 2nd St
Odessa, TX 79763
phone: 432-301-9990
toll free:
fax: 432-301-9991

**South Texas
Sales & Service Center**
1391 County Road 429
Pleasanton, TX 78064
phone: 210-446-5863
toll free:
fax: 830-569-8236



FORGED STEEL INDUSTRIAL UNIONS

3000# Threaded End AAR Unions ASTM A-105

SEAT	FINISH		1/4"	3/8"	1/2"	3/4"	1"	1 1/4"	1 1/2"	2"	2 1/2"	3"
STEEL TO STEEL	BLACK	PART NO.	704100	706100A	708100	712100	716100	720100	724100	732100	740100	748100
		LIST PRICE	34.63	34.63	18.83	35.10	45.86	78.05	89.02	115.65	307.06	352.04
		WEIGHT EA.	0.4	0.72	0.8	1.3	1.666	2.5	3.228	5.1	8.142	12.8
BRONZE TO STEEL	BLACK	PART NO.	704300	706300A	-	712300	716300	720300	724300	732300	-	-
		LIST PRICE	46.38	179.61	-	61.67	122.93	112.27	117.26	139.20	-	-
		WEIGHT EA.	0.4	0.7	-	0.9	2.1	1.8	3.23	5.1	-	-
BRONZE TO BRONZE	BLACK	PART NO.	704400	706400A	-	712400	716400	720400	724400	732400	-	-
		LIST PRICE	65.00	61.31	-	178.36	90.32	120.69	130.78	173.94	-	-
		WEIGHT EA.	0.4	0.7	-	1.17	1.666	2.6	3.23	5.2	-	-

3000# Socket Weld AAR Unions ASTM-105

SEAT	FINISH		1/4"	3/8"	1/2"	3/4"	1"	1 1/4"	1 1/2"	2"	2 1/2"	3"
STEEL TO STEEL	BLACK	PART NO.	704110	706110A	708110A	712110	716110	720110	724110	732110	740110	748110
		LIST PRICE	40.09	40.09	-	100.31	131.30	82.84	88.19	121.68	325.73	392.65
		WEIGHT EA.	0.4	0.6	-	1.3	1.666	2.5	3.228	4.9	8.142	12.4

Where electro-galvanized unions are not shown, add 25% to black union list.

See page 5 for full box quantities.

3000# Screwed High Speed Unions ASTM A-105

SEAT	FINISH		1/4"	3/8"	1/2"	3/4"	1"	1 1/4"	1 1/2"	2"	2 1/2"	3"
STEEL TO STEEL	BLACK	PART NO.	-	-	908100A	912100	916100	920100	924100	932100	940100	948100
		LIST PRICE	-	-	42.64	103.69	61.67	100.46	116.17	148.93	284.23	427.13
		WEIGHT EA.	-	-	0.8	1.4	1.666	2.5	3.228	5.2	8.142	12.8
O'RING TO STEEL	BLACK	PART NO.	904500	-	908500A	912500	916500	920500	924500	932500	940500	948500
		LIST PRICE	183.51	-	141.86	108.58	73.63	97.86	119.50	150.44	288.24	431.34
		WEIGHT EA.	0.4	-	0.8	1.3	2.1	2.6	3.4	5	8.142	12.8
O'RING TO INSULATED	BLACK	PART NO.	904600	-	908600A	912600	916600	920600	924600	932600	940600	948600
		NET EACH	251.25	-	113.17	126.47	136.73	243.63	198.95	231.00	342.63	514.07
		WEIGHT EA.	0.4	-	0.8	1.3	2.1	2.6	3.228	5	8.142	12.8

3000# Socket Weld High Speed Unions ASTM A-105

SEAT	FINISH		1/4"	3/8"	1/2"	3/4"	1"	1 1/4"	1 1/2"	2"	2 1/2"	3"
STEEL TO STEEL	BLACK	PART NO.	-	906110A	908110A	912110	916110	920110	924110	932110	940110	948110
		LIST PRICE	-	52.68	52.68	166.54	73.63	107.07	118.77	164.63	401.18	463.01
		WEIGHT EA.	-	0.7	0.7	1.2	1.666	2.5	3.228	5	8.142	12.2
O'RING TO STEEL	BLACK	PART NO.	-	906510A	908510A	912510	916510	920510	924510	932510	940510	948510
		LIST PRICE	-	55.28	153.35	147.89	171.03	118.77	144.61	194.79	425.52	564.15
		WEIGHT EA.	-	0.7	0.7	1.25	2	2.5	3.228	5	8.142	12.4

Add to List Price of any O'Ring Union

SEE O-RING LIST PRICES PAGE 4

		1/4"	3/8"	1/2"	3/4"	1"	1 1/4"	1 1/2"	2"	2 1/2"	3"
TEFLON OR VITON O'RING	LIST PRICE	-	7.80	7.80	7.80	8.50	9.20	17.70	20.10	24.60	29.40

3000# Orifice Unions (Non-Tabbed Style)

SEAT	FINISH		1/4"	3/8"	1/2"	3/4"	1"	1 1/4"	1 1/2"	2"	2 1/2"	3"
STEEL TO STEEL	SC	PART NO.	704104	-	708104A	712104	716104	720104	724104	732104	-	-
		LIST PRICE	47.79	-	-	61.10	67.50	92.04	106.24	137.90	-	-
		WEIGHT EA.	0.4	-	-	1.3	1.666	2.5	3.228	5.1	-	-
STEEL TO STEEL	SW	PART NO.	704114	-	708114A	712114	716114	720114	724114	732114	-	-
		LIST PRICE	52.68	-	-	163.75	77.79	104.47	121.99	158.76	-	-
		WEIGHT EA.	0.4	-	-	1.3	1.666	2.6	3.228	5	-	-
BRONZE TO STEEL	SC	PART NO.	704304	-	708304A	712304	716304	720304	724304	732304	-	-
		LIST PRICE	59.28	-	-	103.74	113.57	132.08	144.61	174.56	-	-
		WEIGHT EA.	0.4	-	-	1.15	2.1	2.6	3.228	5.1	-	-

3000# Tabbed Orifice Unions

SEAT	FINISH		1/4"	3/8"	1/2"	3/4"	1"	1 1/4"	1 1/2"	2"	2 1/2"	3"
STEEL TO STEEL	SC	PART NO.	-	-	708105A	712105	716105	720105	724105	732105	-	-
		LIST PRICE	-	-	-	84.45	97.03	135.41	147.11	174.56	-	-
		WEIGHT EA.	-	-	-	1.3	1.666	2.5	3.228	5.1	-	-
STEEL TO STEEL	SW	PART NO.	-	-	708115A	712115	716115	720115	724115	732115	-	-
		LIST PRICE	-	-	-	194.43	103.74	146.33	161.36	203.01	-	-
		WEIGHT EA.	-	-	-	1.3	1.666	2.6	3.228	5	-	-

DRILLING CHARGE: \$3.75 each net with minimum hole size 1/64" through 1". \$5.00 each net with hole size over 1".

NOTE: Kemper Orifice Cup Unions do not require gasket materials to seal and are therefore only subject to the temperature limitation of the union.

3000# Male / Female Unions

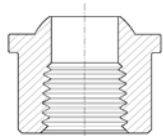
SEAT	FINISH		1/4"	3/8"	1/2"	3/4"	1 "	1 1/4"	1 1/2"	2"	2 1/2"	3"
STEEL TO STEEL	AAR	PART NO.	704120	706120A	708120A	712120	716120	720120	724120	732120	-	-
		LIST PRICE	324.48	69.68	-	97.14	112.94	152.62	238.26	344.60	-	-
		WEIGHT EA.	0.5	0.8	-	1.17	1.67	3	3.8	5.8	-	-
BRONZE TO STEEL	AAR	PART NO.	704320	706320A	708320A	712320	716320	720320	724320	732320	-	-
		LIST PRICE	85.54	85.54	-	104.05	125.37	162.34	267.18	393.28	-	-
		WEIGHT EA.	0.5	0.5	-	1.2	1.67	2.9	3.23	5.8	-	-

3000# Screwed Lug Nut Union ASTM A-105

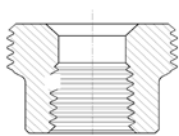
SEAT	FINISH		1/4"	3/8"	1/2"	3/4"	1 "	1 1/4"	1 1/2"	2"	2 1/2"	3"
STEEL TO STEEL	BLACK	PART NO.	-	806100A	808100A	812100	816100	820100	824100	832100	840100	848100
		NET EACH	-	164.79	-	117.34	62.25	102.66	100.41	117.60	86.84	343.79
		WEIGHT EA.	-	0.7	-	1.426	1.8	2.93	4	6	10.25	14
O'RING TO STEEL	BLACK	PART NO.	-	806500A	808500A	812500	816500	820500	824500	832500	-	848500
		NET EACH	-	53.07	-	126.04	70.49	130.33	115.29	128.08	-	386.75
		WEIGHT EA.	-	0.7	-	1.4	2.037	2.9	4	6.15	-	14
O'RING TO INSULATED	BLACK	PART NO.	-	-	808600A	812600	816600	820600	824600	832600	-	848600
		NET EACH	-	-	-	169.31	147.21	346.32	219.69	237.39	-	276.69
		WEIGHT EA.	-	-	-	1.4	2	2.9	4	6.003	-	13.9

3000# Socket Weld Lug Nut Union ASTM A-105

SEAT	FINISH		1/4"	3/8"	1/2"	3/4"	1 "	1 1/4"	1 1/2"	2"	2 1/2"	3"
STEEL TO STEEL	BLACK	PART NO.	-	806110A	808110A	812110	816110	820110	824110	832110	-	848110
		NET EACH	-	79.13	-	170.92	70.49	113.17	117.57	171.30	-	451.10
		WEIGHT EA.	-	0.7	-	1.4	1.8	2.93	4	6.2	-	13.5
O'RING TO STEEL	BLACK	PART NO.	-	806510A	808510A	812510	816510	820510	824510	832510	-	848510
		NET EACH	-	96.29	-	79.13	157.60	141.38	132.46	179.80	-	192.40
		WEIGHT EA.	-	0.7	-	1.4	1.9	2.93	4	6.2	-	13.5



MALE ENDS
ALL TYPES



FEMALE ENDS

SPARE PARTS 3000# Forged Steel Unions

Male Ends - All Types

		1/4"	3/8"	1/2"	3/4"	1 "	1 1/4"	1 1/2"	2"	2 1/2"	3"
SCREWED	PART NO.	704101	706101A	708101A	712101	716101	720101	724101	732101	-	748101
	LIST PRICE	18.06	18.06	-	22.63	29.23	50.38	50.38	56.68	-	187.72
SOCKET WELD	PART NO.	704111	706111A	708111A	712111	716111	720111	724111	732111	-	748111
	LIST PRICE	22.63	22.63	-	27.83	35.73	61.43	61.43	70.92	-	229.72
INSULATED	PART NO.	-	-	908801A	912801	916801	920801	924801	932801	-	948801
	LIST PRICE	-	-	29.23	35.73	47.08	79.90	79.90	92.58	-	299.34

Female Ends - All Types

		1/4"	3/8"	1/2"	3/4"	1"	1 1/4"	1 1/2"	2"	2 1/2"	3"
SCREWED	PART NO.	704102	706102A	708102A	712102	716102	720102	724102	732102	740102	748102
	LIST PRICE	21.15	21.15	-	25.93	34.02	51.87	51.87	58.26	115.12	195.60
SOCKET WELD	PART NO.	704112	706112A	708112A	712112	716112	720112	724112	732112	740112	748112
	LIST PRICE	27.83	27.83	-	29.23	39.00	66.42	66.42	80.90	202.07	280.10
BRONZE TO STEEL	PART NO.	704302	706302A	708302A	712302	716302	720302	724302	732302	-	-
	LIST PRICE	59.28	54.76	-	80.90	87.60	100.43	112.02	116.60	-	-

Lug and High Speed Type

		1/4"	3/8"	1/2"	3/4"	1"	1 1/4"	1 1/2"	2"	2 1/2"	3"
SCREWED	PART NO.	-	906102A	908102A	912102	916102	920102	924102	932102	940102	948102
	LIST PRICE	-	21.15	24.45	29.23	35.73	51.87	56.68	84.19	178.06	245.88
SOCKET WELD	PART NO.	-	906112A	908112A	912112	916112	920112	924112	932112	940112	948112
	LIST PRICE	-	27.83	30.92	34.02	42.30	69.72	70.92	106.62	284.68	317.39

O-Ring Type

		1/4"	3/8"	1/2"	3/4"	1"	1 1/4"	1 1/2"	2"	2 1/2"	3"
SCREWED	PART NO.	-	906702A	908702A	912702	916702	920702	924702	932702	940702	948702
	LIST PRICE	-	24.45	24.45	47.10	35.73	48.39	53.76	43.86	206.88	292.94

Nut Piece

AAR Type

		1/4"	3/8"	1/2"	3/4"	1"	1 1/4"	1 1/2"	2"	2 1/2"	3"
SCREWED or SOCKET WELD	PART NO.	704293	706293A	708293A	712293	716293	720293	724293	732293	740293	748293
	LIST PRICE	18.06	18.06	-	18.06	22.63	45.19	45.19	68.24	108.54	145.83

High Speed Type

		1/4"	3/8"	1/2"	3/4"	1"	1 1/4"	1 1/2"	2"	2 1/2"	3"
SCREWED or SOCKET WELD	PART NO.	-	906293A	908293A	912293	916293	920293	924293	932293	940293	949293
	LIST PRICE	-	29.23	29.23	32.33	40.90	59.74	61.43	90.46	135.86	195.60

Lug Type

		1/4"	3/8"	1/2"	3/4"	1"	1 1/4"	1 1/2"	2"	2 1/2"	3"
SCREWED or SOCKET WELD	PART NO.	-	806293A	808293A	812293	816293	820293	824293	832293	840293	848293
	LIST PRICE	-	35.73	-	48.39	76.32	106.62	123.27	39.80	263.91	263.91

Blank Orifice Cups

		1/4"	3/8"	1/2"	3/4"	1"	1 1/4"	1 1/2"	2"	2 1/2"	3"
CUP TYPE	PART NO.	704994	-	708994	712994	716994	720994	724994	732994	-	-
	LIST PRICE	9.97	-	11.38	14.96	26.52	19.26	24.45	27.83	-	-
TABBED TYPE	PART NO.	-	-	708995	712995	716995	720995	724995	732995	-	-
	LIST PRICE	-	-	-	24.45	27.83	32.33	42.30	50.38	-	-

O-Rings

		1/4"	3/8"	1/2"	3/4"	1"	1 1/4"	1 1/2"	2"	2 1/2"	3"
BUNA	PART NO.	980000	-	980002	980003	980004	980005	980006	980007	980008	980009
	LIST PRICE	4.11	-	4.11	4.11	4.11	5.20	5.93	6.60	8.42	9.41
VITON	PART NO.	980010	-	980012	980013	980014	980015	980016	980017	980018	980019
	LIST PRICE	6.60	-	6.60	7.80	8.42	9.41	14.51	16.85	20.33	23.56
TEFLON	PART NO.	980020	-	980022	980023	980024	980025	980026	980027	980028	980029
	LIST PRICE	6.60	-	6.60	7.80	8.42	9.41	14.51	16.85	20.33	23.56

KEMPER

VALVE & FITTINGS CORPORATION

Modular Packaging

Kemper packaging is designed for your convenience in ordering, shipping, receiving and storing. Boxes are 300 lb. test and stapled as a further safety precaution and lend themselves to warehouse palletizing. A rust inhibitor provides you with a shelf-protected product until used.

FOR/3000# AAR UNIONS WITH OCTAGON NUT / MALE AND FEMALE UNIONS / HIGH SPEED UNIONS / BRONZE TO STEEL / BRONZE TO BRONZE UNIONS AND ORIFICE UNIONS

Size	1/4"	3/8"	1/2"	3/4"	1"	1 1/4"	1 1/2"	2"	2 1/2"	3"
Quantity	150	100	-	50	40	20	15	10	7	2
Weight per Box	60	72	-	65	67	50	49	51	57	26

FOR / LUG NUT UNIONS / WITH O'RING

Size	-	3/8"	1/2"	3/4"	1"	1 1/4"	1 1/2"	2"	2 1/2"	3"
Quantity	-	100	-	40	30	15	12	15	10	6
Weight per Box	-	70	-	58	54	44	48	90	103	84

FREIGHT ALLOWANCE

Freight Allowed on 500 lbs. in the U.S. and Canada, excluding Alaska, Hawaii and Puerto Rico.

Claims for shortages, errors, etc. must be made at the time of receipt of goods, otherwise no allowance will be made.

NOTE: "Price in effect" at time of shipment.